

# ASSA 22CL

## Compact Code Lock with AUX



22CL is a compact code lock for easy mounting. The code lock gives the possibility for access control to premises that do not need high security. Examples of such premises are locker rooms, internal storage, interior doors and entrance doors to apartment buildings.

The code lock can be used both indoors and outdoors and fulfills the requirements for IP54. The buttons have a distinct touch response and the digits are back-lit in a blue tone.

A door with this code lock is locked immediately when the door is closed, if an electric strike with a door monitor switch is connected. This is due to the built-in termination function for the door relay output.

22CL also has an AUX relay that can be selected to control an extra door with its own code or with a common code for both doors.

The function is easily selected at code programming, if the code should be connected to the door output, to the AUX output or if both outputs should be affected by the selected code.

The AUX output on 22CL can also be selected to switching operation by a defined code. This switching function to the AUX relay can be used to set a door unlocked, by a selected code, until the code is entered again.

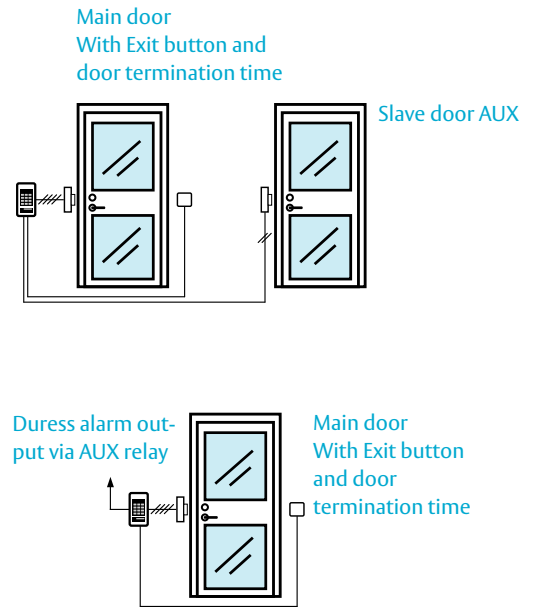
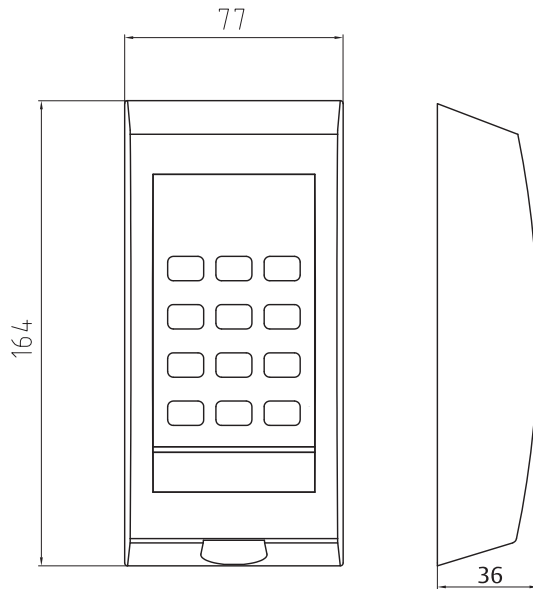
22CL also has the possibility to let the AUX output be selected to work as a duress alarm output. In that mode the AUX relay is activated when the first digit in the code is raised by one and the regular door relay is activated at the same time as an alarm can be transmitted, e.g. via an alarm transmitter. With 220CL you can choose between 4 or 6 digit access codes.

22CL is easily programmed from the keypad. The code memory is independent of voltage, making it possible through a time switch.

**ASSA**<sup>®</sup>  
**ASSA ABLOY**

# ASSA 22CL

## Compact Code Lock with AUX



# ASSA®

## ASSA ABLOY

ASSA ABLOY, the global leader in door opening solutions, dedicated to satisfying end-user needs for security, safety and convenience.

ASSA ABLOY Security Solutions  
School Street  
Willenhall  
Wolverhampton  
WV13 1PW

Customer support:  
phone: 0845 070 6713  
e-mail: sales@assaabloy.co.uk  
www.assa.co.uk

### Indications

- Programming mode
- Programming accepted
- Programming not accepted
- Erroneous code block
- Unlocked
- "Key press" indication

### Data

- Feeding voltage: 12-24 V AC/DC
- Max current: 22CL = 85 mA
- Output, current or clean contact relay: max 24 V/1 A

### Material

- Cover in polycarbonate
- Stainless push buttons
- Cast base plate and cover

### Accessories

- 6160RS Rain cover

### Functions

- Seven 4 or 6 digit codes
- Code 5 & 6 can be jointly blocked via e.g. a time switch
- Code 7 can be time limited for 1 to 9 days
- Aux relay output
- One or two doors (Selectable via DIP)
- Duress alarm function (Selectable via DIP)
- Switching relay On/Off via code
- Erroneous code block (Selectable via DIP)
- Automatic termination of opening time
- Fulfills the requirements for IP54
- Lockable casing
- Back-lit keypad in a blue tone (On/Off via DIP)

### Article number

- ASSA 22CL Silver grey 532 222 000 86
- ASSA 22CL Black 532 222 000 84

**CE** CE controlled and approved