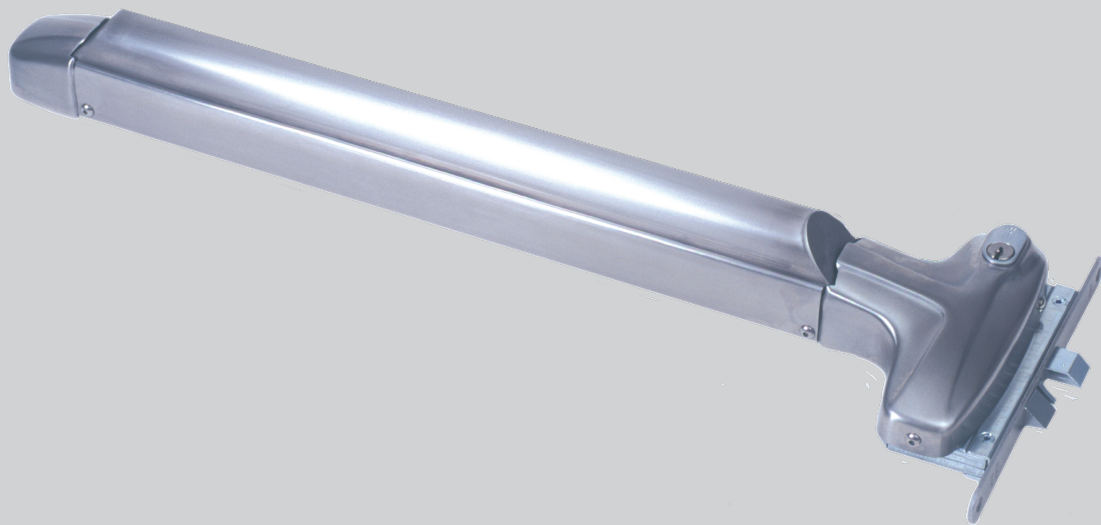


# ASSA 1125

## Panic Exit Device



### Area of application

Panic exit device 1125 for modular double doors. Used on a hinged door on emergency routes where there is a requirement for quick escape for instance in shopping malls, theatres, hospitals and schools.

### Function

- The door can always be opened from the inside by using the exit device.
- The panic exit device will draw back the deadbolt inside the lock case together with the latch in the same movement
- By use of cylinder authorised personnel can enter from both outside and inside of the door.
- Use of handle on the outside guarantees re-entry after emergency escape (necessary in case of emergency route being blocked, for instance by fire).
- Microswitch on the emergency bar indicates opening by use of panic exit device. See panic exit device 1125:1 for usage on the passive door leaf.

### Features 1125

- Available in 3 different lengths:
  1. M8 for door leaf width 670-815 mm
  2. M9-10 for door leaf width 816-1010 mm
  3. M11-14 for door leaf width 1011-1300 mm
- Mounted with ASSA lock case 1525 or 1526
- Mounted with strike plate 1887.  
All visible parts are made of brushed stainless steel.

### Features lock case 1525/1526

- Constructed of material for fireproof doors.
- Hardened steel deadbolt thrown 21 mm (1525 only)
- Latchbolt deadlocks automatically when door is closed.
- Split follower lock.
- Lock case 1525 is equipped with microswitch, M3

### Accessories

- Strike plate 1887
- Accessory 3325. Decorative round cylinder holder, round cylinder ring and handle 6696 for the outside of the door.
- Accessory 3425. Decorative round cylinder holder, round cylinder ring and cover plate for the outside of the door.

**ASSA**<sup>®</sup>  
**ASSA ABLOY**

ASSA ABLOY, the global leader  
in door opening solutions.

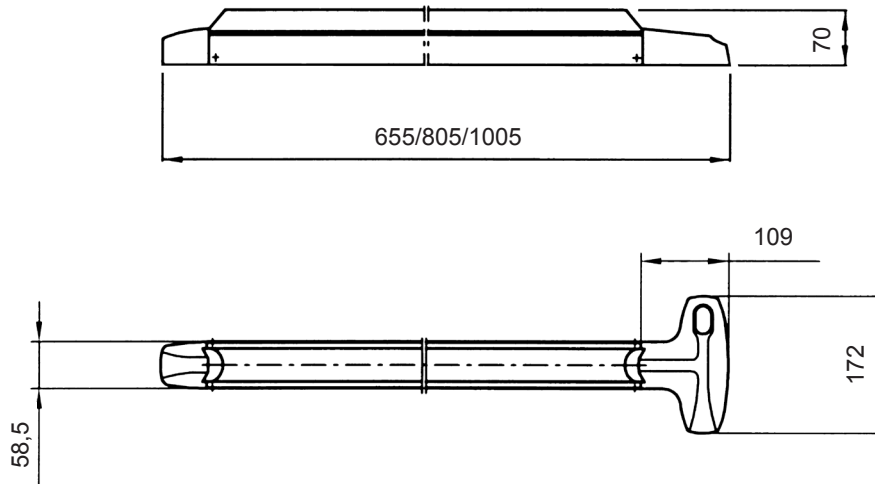


CE-approved to  
SS-EN 1125 and 89/106/EEG

# ASSA 1125

## Panic Exit Device

### Measurement



**ASSA**<sup>®</sup>

**ASSA ABLOY**

ASSA ABLOY, the global leader in door opening solutions, dedicated to satisfying end-user needs for security, safety and convenience.

ASSA AB  
P.O. Box 371  
SE-631 05 Eskilstuna  
Sweden

phone +46 (0)16 17 70 00  
fax +46 (0)16 17 70 49

Customer support:  
phone intl. +46 (0)16 17 71 00  
phone nat. 0771-640 640  
fax +46 (0)16 17 73 72  
e-mail: [helpdesk@assa.se](mailto:helpdesk@assa.se)

[www.assa.se](http://www.assa.se)