

ORDER SPECIFICATION CODE

Based on the code system here you should be able to specify the handle type, material and finish, and the type of fixing nut you would like suiting to door thickness. **Please specify in a similar way to the following example:**

Double-sided door handle (pair)

Sample code specification:

K4-600/25BM5
CODE FINISH s CODE
METAL DOOR THICKNESS

Single-sided door handle (piece)

Sample code specification:

K4-600/25BM5#
CODE FINISH s CODE
METAL DOOR THICKNESS 1 SIDE OPTION

Single-sided handles (pieces)

= Fixing guide, not through door

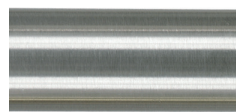
Fixing guide, through door

METAL & FINISH

Please specify metal or wood finish.

B Brushed Stainless Steel

P Polished Stainless Steel



RAL Powder coating (ESD)



C Polished Brass CuZn



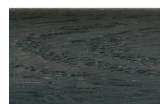
Wood Natural



Wood Brown



Wood Black

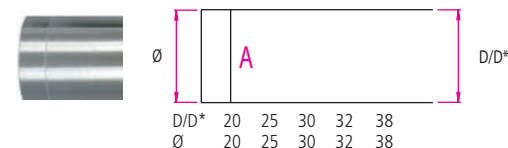
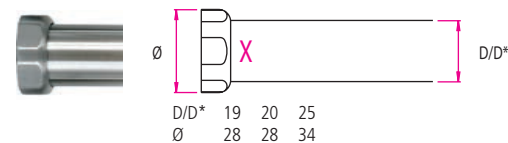
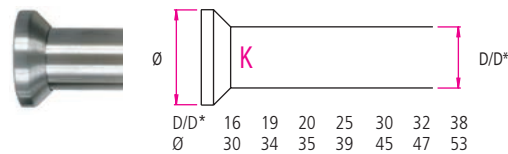
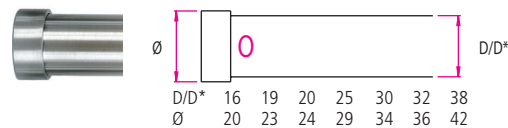
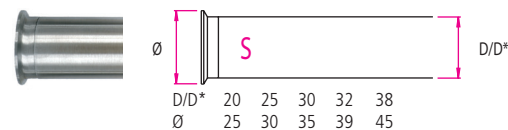
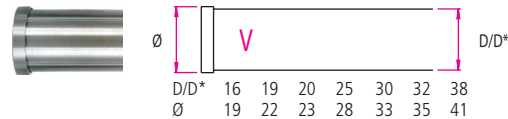
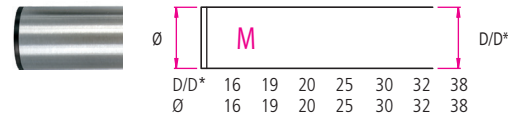


FIXING

Handles are available with a variety of round or hexagonal fixing nuts.

Please specify **M, V, S, O, K, X, A** fixing, based on the table of fixing nuts shown here.

If **M, V** fixing, please specify for Right Hand **RH** or Left Hand **LH** opening doors.



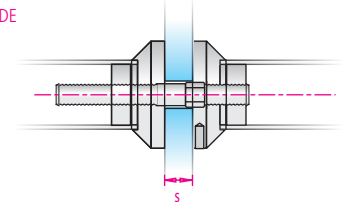
DOOR THICKNESS s min. 5 mm

Please specify length of fixing bolt using the **s CODE** based on the thickness of the door.

Handles are suitable for doors or all materials.

s DOOR THICKNESS s CODE

5 – 25 mm	1
25 – 40 mm	2
40 – 55 mm	3
55 – 70 mm	4
70 – 85 mm	5
85 – 100 mm	6



FLANGE FIXING

Flange **F, FD**

Double-sided door handle (pair) Sample code specification:

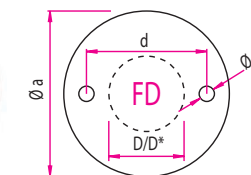
K4-600/25BFDN mm
CODE FINISH DOOR THICKNESS
METAL

Single-sided door handle (piece) Sample code specification:

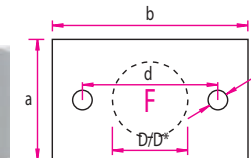
K4-600/25BFDN=
CODE FINISH
METAL 1 SIDE OPTION

N (Nut) Flange nut

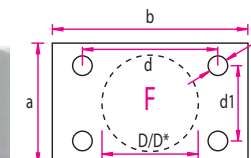
H (Hidden) Flange screw



D/D*	19	20	25	30	32	38
Ø a	45	45	55	60	60	70
d	32	32	40	47	47	54
e	5	5	5	5	5	6



D/D*	19	20	25
a	30	30	40
b	55	55	65
d	40	40	45
e	6	6	6

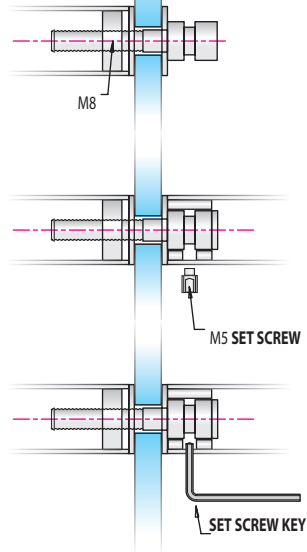


D/D*	30	32
a	40	40
b	65	65
d	45	45
d1	25	25
e	6	6

Fixing guides

Opening diameter drilled for fixing bolt: Glass door = 12mm. Doors of all other materials = 10mm.
If not **M, V, S, O, K, X** or **A** fixing, then opening diameter drilled should be made to suit the fixing bolt.

M or V fixing

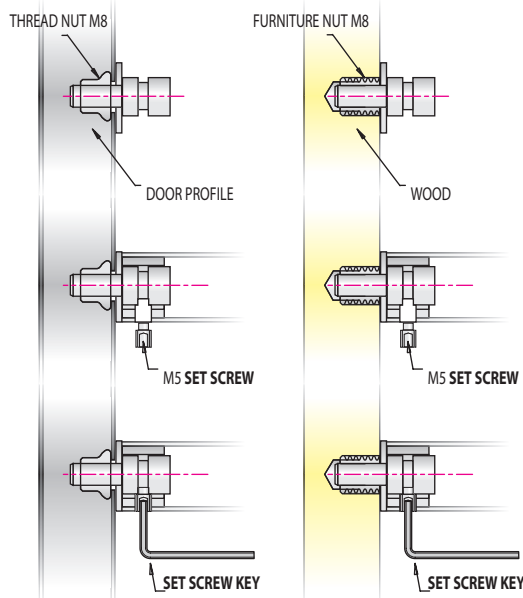


Double-sided handles (pair)

M, V Fixing guide

1. Start installation by turning the bolt to fix the external handle to the door.
2. Align the inside handle to allow bolt head to be inserted.
3. Push the inside handle against the door and turn the **set screw** steadily clockwise using the **set screw key**.

M or V fixing, single-sided, set screw
= Not through door

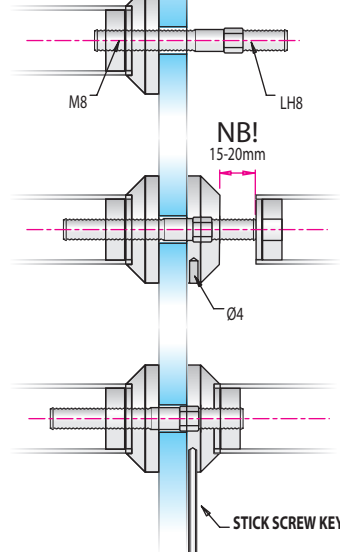


Single-sided handles (pieces)

Set screw, Fixing guide

1. Start installation by turning the bolt tightly into the thread nut or furniture nut in the door.
 2. Align the door handle with the bolts.
 3. Push the handle against the door and turn the **set screw** steadily clockwise using the **set screw key**.
- Note: the furniture nut M8 or the thread nut M8 are **not supplied** with the handles.

S, O, K, X or A fixing

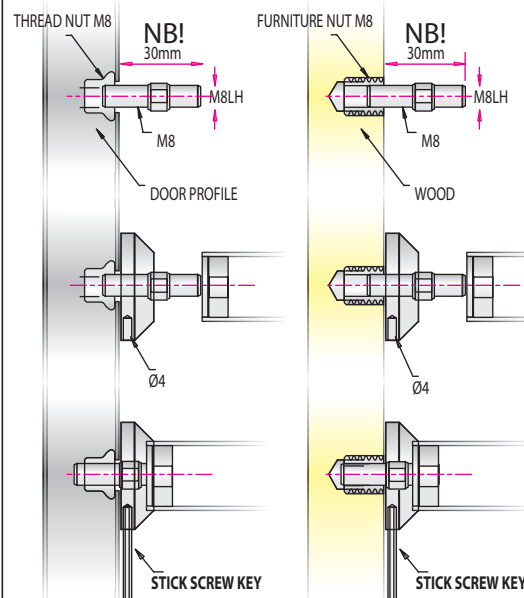


Double-sided handles (pair)

S, O, K, X, A Fixing guide

1. Start installation by turning the bolt to fix the external handle to the door.
2. The screw with the nut (six-facet) must remain inside of the door.
3. Twist the screw so far that it remains 10 mm out from the outer side of the nut.
4. The inside door handle has a left handed thread which attaches to the bolt. Using the **stick screw key** turn the fixing nut steadily clockwise until it is tight.

S, O, K, X or A fixing, single-sided, stick screw
= Not through door

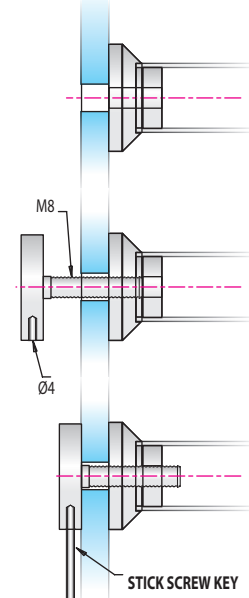


Single-sided handles (pieces)

Stick screw, Fixing guide

- NB! In the case of the headless bolt M8, the bolt should be screwed in so that it remains protruding by 30mm.
1. Align the door handle with the bolts.
 2. Push the handle against the door.
 3. The door handle has a left handed thread which attaches to the bolt. Using the **stick screw key** turn the fixing nut steadily clockwise until it is tight.
- Note: the furniture nut M8 or the thread nut M8 are **not supplied** with the handles.

M, V, S, O, K, X or A fixing
Through door

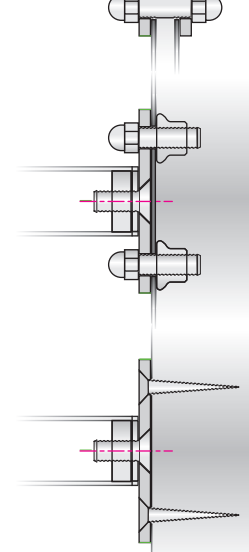


Single-sided handles (pieces)

Fixing guide

1. Align the door handle with drilled holes.
2. Place bolts to align with handle.
3. The door handle has a right handed thread which attaches to the bolt. Using the **stick screw key** turn the fixing nut steadily clockwise until it is tight.

F or FD FLANGE FIXING



Please note: Inside door fixing detail Thread Nuts or Furniture Nuts are not supplied by Diamantek. These should be supplied by the door manufacturer.